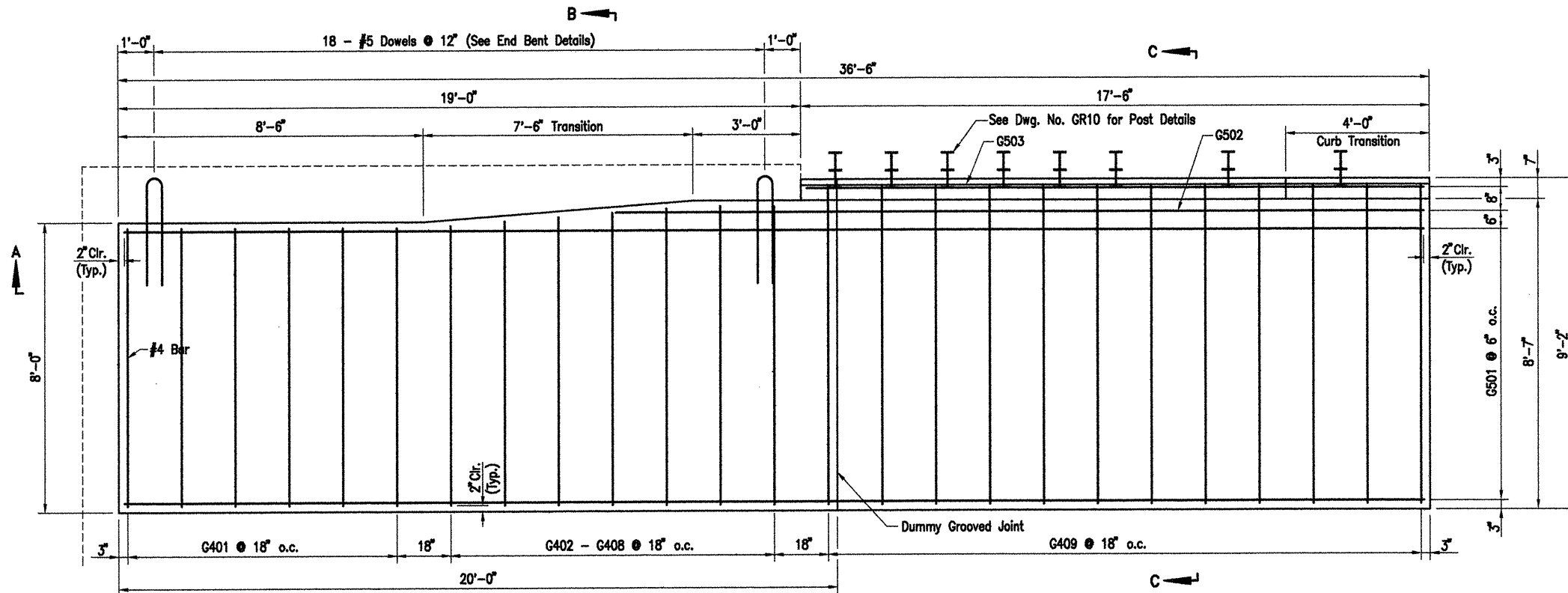


ACAD SCALE: 1/2" = 1'-0"

COMPANY\1999 JOBS\99-044 AHTD\WHITERIVER\JOB 110394\appputtat1&2

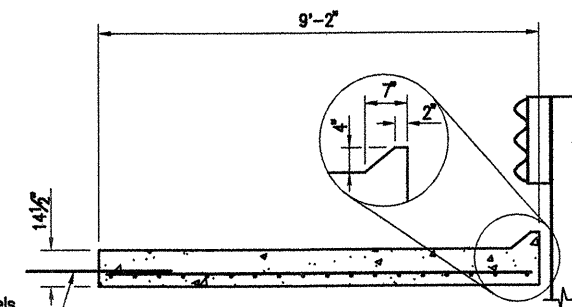
DATE REVISED	DATE FILMED	DATE REVISED	DATE FILMED	FED. ROAD NO.	STATE	FED. AID PROJ. NO.	SHEET NO.	TOTAL SHEETS
					ARK.			
						JOB NO. 110394	103	196
						06830	APPR. GUTTERS	42015



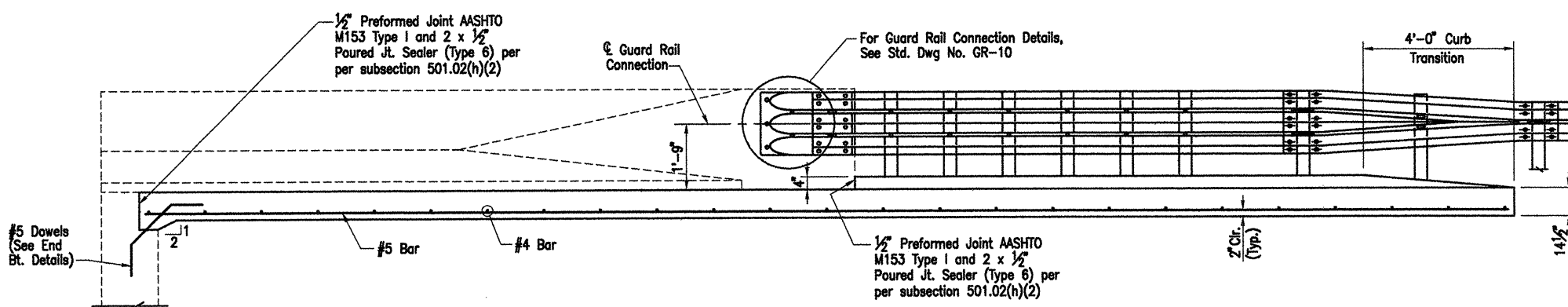
PLAN
Scale: 1/2" = 1'-0"

Construct gutter curb with height transition as shown if drop inlet is not placed at end of gutter.

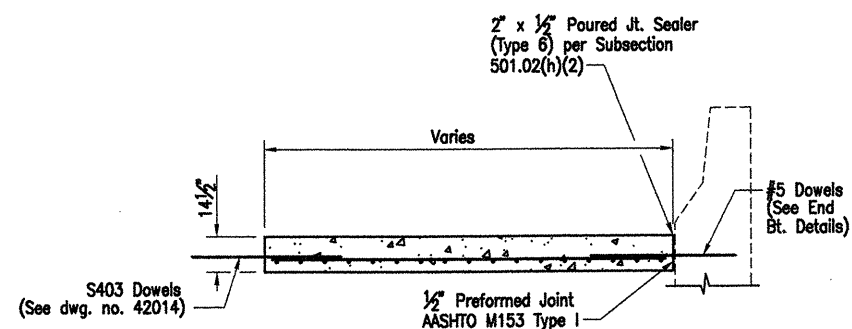
Construct gutter curb full height (no height-transition) if drop inlet is placed at end of gutter. Curb height transition placed on drop inlet. See drop inlet details.



SECTION C-C
Scale: 1/2" = 1'-0"



SECTION A-A
Scale: 1/2" = 1'-0"



SECTION B-B
Scale: 1/2" = 1'-0"

BAR LIST FOR ONE GUTTER

Mark	No. Req'd	Length
G401	6	7'-8"
G402 - G408	1 each	7'-10" to 8'-3"
G409	12	8'-10"
G501	16	36'-4"
G502	1	22'-6"
G503	1	17'-2"

QUANTITIES FOR ONE
SQUARE APPROACH GUTTER

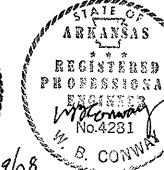
Shoulder Width(s) feet	Reinforcing Steel lbs.	Concrete c.y.
8'-0"	787	14.4

GENERAL NOTES

Concrete shall be Class S or Class S (AE) or mixture used for Portland Cement Concrete Pavement.

Reinforcement Steel shall conform to AASHTO M31 or M53, Grade 60.

Approach Gutters will be measured and paid for in accordance with Section 504 of the Standard Specifications.



ALTERNATE NO. 1 & NO. 2

DETAILS OF
SPECIAL APPROACH GUTTERS

WHITE RIVER STR. & APPRS.
(CLARENDON) (PH. II) (F)
MONROE COUNTY

ROUTE 79 SEC. 13
ARKANSAS STATE HIGHWAY COMMISSION
LITTLE ROCK, ARK.

Engstrom/Modjeski and Masters, Inc.

DRAWN BY: PMR DATE: Nov. 07 FILENAME: b110394_g2
CHECKED BY: YO DATE: Nov. 01 SCALE: 1/2" = 1'-0"
DESIGNED BY: FS DATE: Nov. 01
BRIDGE NO. 06830 DRAWING NO. 42015

